

# PALETTI MARMI

2026

SURFACES





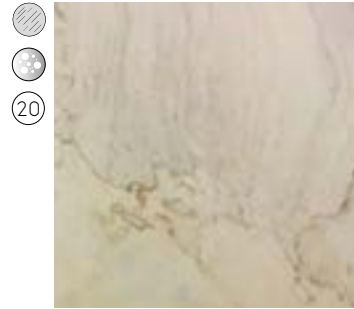
## PIETRA NATURALE

La lavorazione K-PROOF®, rende le pietre Marmotex altamente resistenti ad urti, graffi, completamente impermeabili, idonee al contatto con gli alimenti, facili da mantenere e durevoli nel tempo. Ciascuna lastra originale è identificabile dal marchio registrato K-PROOF® stampato in modo indelebile sul retro ad ulteriore garanzia di qualità ed unicità del prodotto.

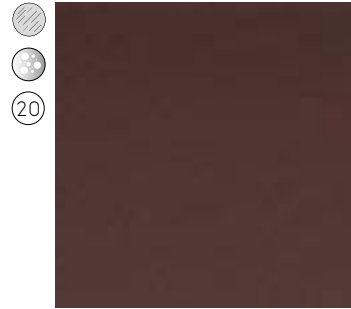
## ANTIMACCHIA



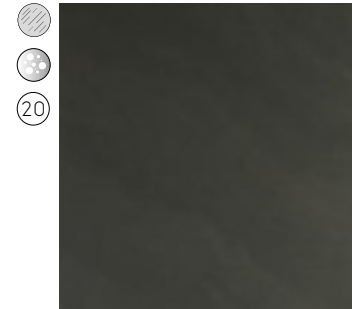
# GRUPPO 01



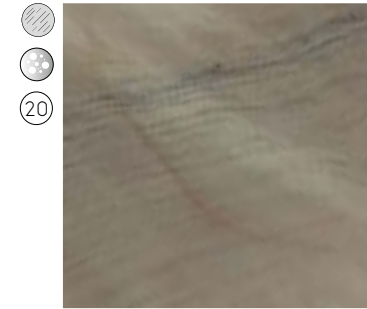
ATLANTIC BEIGE



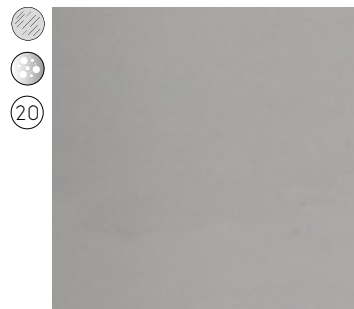
GAJA BROWN



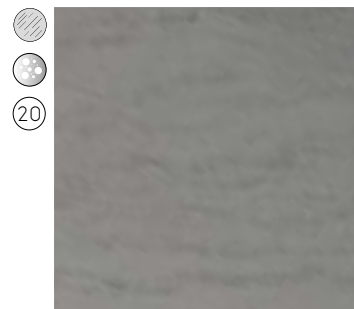
GAJA DARK



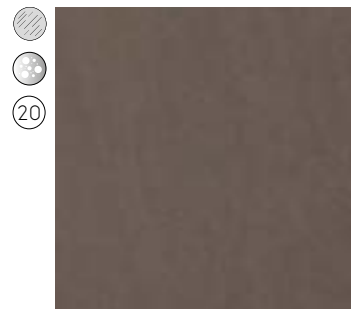
GAJA GOLD



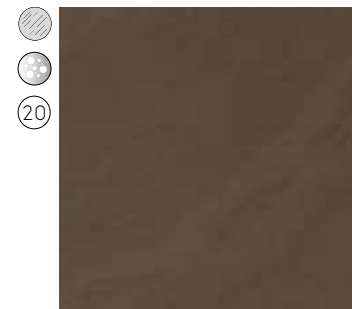
GAJA GREY



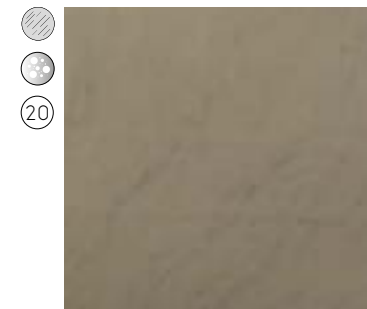
GAJA MOON



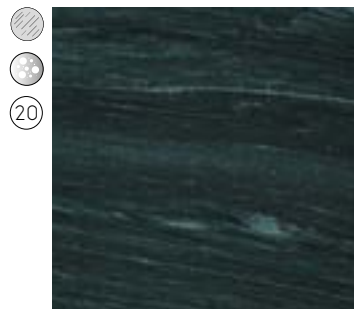
GAJA SAND



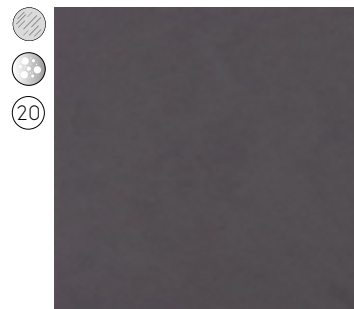
GAJA VENUS



GAJA WHITE

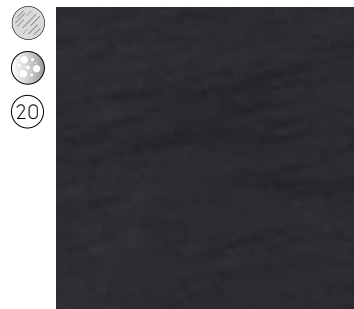


PACIFIC GREEN

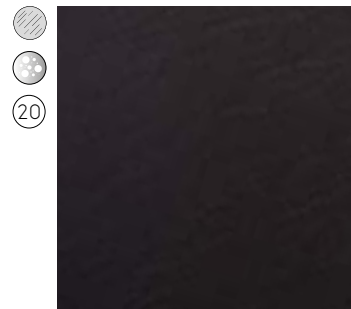


PACIFIC GREY

# GRUPPO 02




IPANEMA BLACK



IPANEMA BROWN

## LEGENDA:

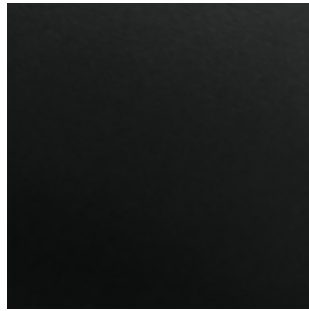
 opaco  lucido

 strutturato

 spessore 20mm

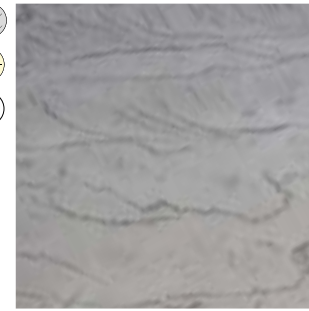
DIMENSIONI LASTRE variabile

GRUPPO  
03

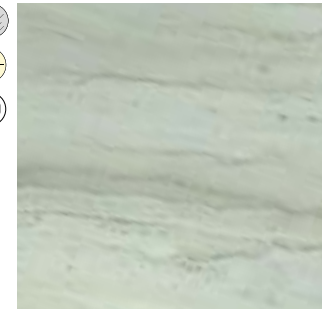


TOTAL BLACK

GRUPPO  
04



CIRIO WHITE



EGEA WHITE

GRUPPO  
05

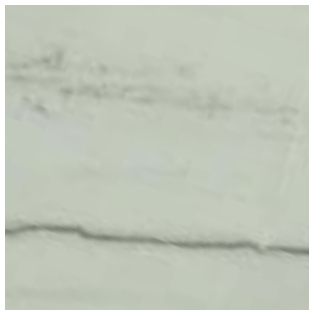
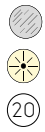


ORION BLACK



SIRIO GREY

GRUPPO  
06



COTTON WHITE

LEGENDA:

opaco    lucido    strutturato

spessore 20mm

DIMENSIONI LASTRE variabile



VIA ENZO TORTORA, 113 - 00188 ROMA - TEL. 06.3328187 - FAX 06.33686420  
- INFO@PALETTIMARMI.IT

A photograph of a marble wall and floor. The wall is composed of large rectangular panels with a complex, organic pattern of brown, orange, and grey veins. The floor in the foreground shows a similar pattern, with a prominent horizontal vein of light brown and orange. The lighting is soft, highlighting the texture and color variations of the stone.

PALETTI MARMI

# CATALOGO

2026

