

# PALETTI MARMI

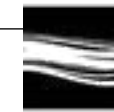
2026

SURFACES



**SENSA**  
by COSENTINO®





SENSA  
by COSENTINO®

# NATURA

Selezione esclusiva di pietre naturali con design unici per creare spazi straordinari.

# INNOVAZIONE

Granito e quarzite con speciale protezione antimacchia per offrire agli spazi vantaggi estetici e funzionali

SENSA  
by COSENTINO®



# GRUPPO 01



BLACK BEAUTY



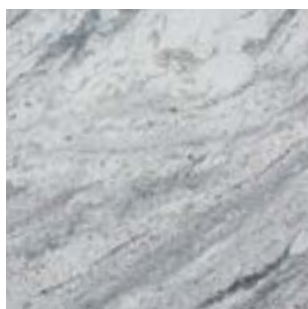
COLONIAL WHITE



ICE BLUE



INDIAN BLACK



SANT'ANGELO

## LEGENDA:



opaco



lucido



strutturato



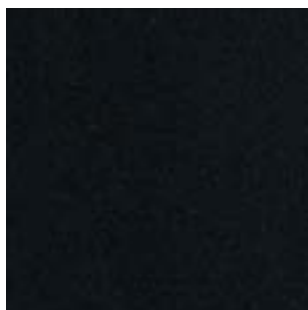
spessore 20mm

DIMENSIONI LASTRE variabile

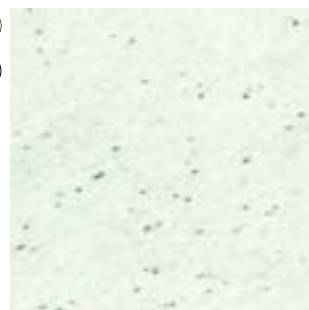
# GRUPPO 02



GLACIAL BLUE



MOAK BLACK



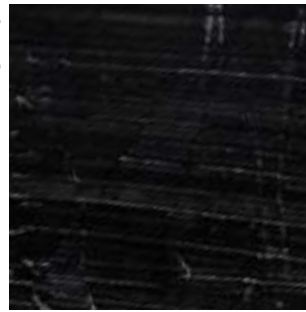
SIBERIA



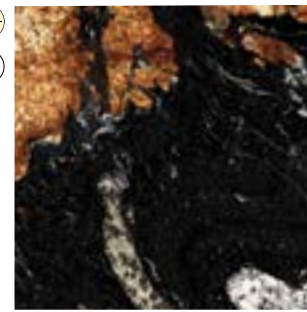
# GRUPPO 03



NAHOA

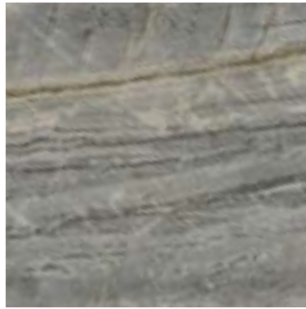


OIHANA



ORINOCO

# GRUPPO 04



MARAU



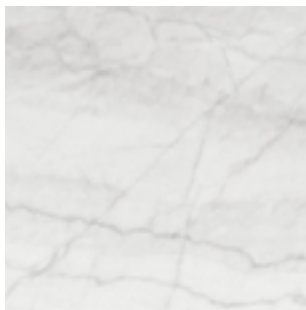
NILO



PLATINO



VANCOUVER



WHITE MACAUBAS

## LEGENDA:



opaco



lucido



strutturato



spessore 20mm

DIMENSIONI LASTRE variabile

# GRUPPO 05



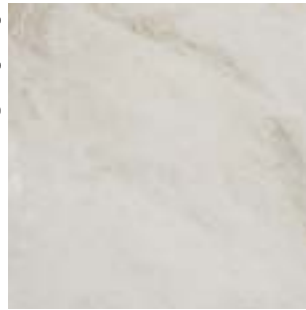
20



ITARA



20



TAJ MAHAL

# GRUPPO 06



20



CRISTALO

## LEGENDA:



opaco



lucido



strutturato



spessore 20mm

DIMENSIONI LASTRE variabile





VIA ENZO TORTORA, 113 - 00188 ROMA - TEL. 06.3328187 - FAX 06.33686420  
- INFO@PALETTIMARMI.IT

A photograph of a wall and floor made of marble. The wall is composed of large rectangular tiles with a complex, multi-colored pattern of brown, orange, grey, and white veins. The floor in the foreground shows a similar pattern, with some tiles having a more pronounced orange and brown color scheme. The lighting is soft, highlighting the natural texture and variations in the stone.

PALETTI MARMI

# CATALOGO

2026